

Session 2

The Wheels on the Bus (Bb Instruments) arr R Michael

This session demonstrates how to improvise on a standard tune, using the chord changes of A and E7. As you improvise, keep the tune in your head and be aware of when the chords change.

Melody

Chords

A E7

A E7 A

No 1. Repetition - just play it again with a different ending.

A E7

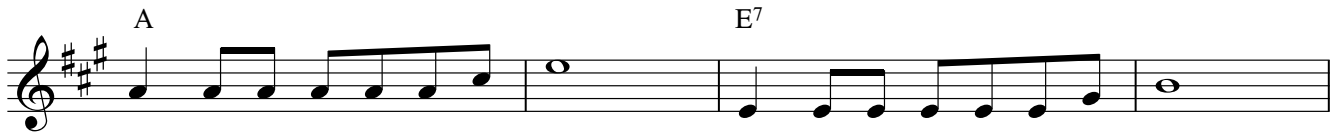
A E7 A

No 2. Inversion - turn the phrase upside down.

A E7

A E7 A

No 3. Transposition - move the phrase up or down the scale.



No 4. Space - miss out a bit.



No 5. Call and response - play a phrase, then give it a musical answer. It is said that the great Mozart also used this idea.



No 6. Sequence/Pattern - move the phrase up or down the chord tones.



No7. Anticipation - play a phrase then repeat it, starting before you expect the phrase to start.

Musical notation for Exercise No. 7, Anticipation. It consists of two staves in G major. The first staff shows a phrase starting on A4, moving up stepwise to G5, then down to E4, and back up to G5. The second staff repeats the same phrase, but the first two notes (A4 and B4) are played earlier than the first bar line, creating an anticipation effect. Chords A and E7 are indicated above the notes.

No 8. Augmentation - play a phrase then repeat doubling the time values.

Musical notation for Exercise No. 8, Augmentation. It consists of two staves in G major. The first staff shows a phrase starting on A4, moving up stepwise to G5, then down to E4, and back up to G5. The second staff repeats the same phrase, but the notes are held for twice as long as in the first staff, illustrating augmentation. Chords A and E7 are indicated above the notes.

No 9. Diminution - play a phrase then halve the time values.

Musical notation for Exercise No. 9, Diminution. It consists of two staves in G major. The first staff shows a phrase starting on A4, moving up stepwise to G5, then down to E4, and back up to G5. The second staff repeats the same phrase, but the notes are played at half the duration of the first staff, illustrating diminution. Chords A and E7 are indicated above the notes.

No 10. Displacement - play a phrase, then repeat moving the pitches around to different places in the bar.

Musical notation for Exercise No. 10, Displacement. It consists of two staves in G major. The first staff shows a phrase starting on A4, moving up stepwise to G5, then down to E4, and back up to G5. The second staff repeats the same phrase, but the notes are displaced to different positions within the bar, illustrating displacement. Chords A and E7 are indicated above the notes.